



Modern and Majestic JOI-Design Bestows Stately Sophistication upon Le Méridien Stuttgart

19/09/2011

The Diplomatic and Presidential Suites of Le Méridien Stuttgart have recently undergone a soft refurbishment by Hamburg-based interior design practice JOI-Design. The hotel is situated next to the verdant Schlossgarten Park, at the heart of a city known for its proximity to the Black Forest and its vineyards as well as its beautiful squares, varied architecture and cultural heritage. With panoramic views of a 650 year-old palace garden bestowed with both 10th century and Baroque castles, the hotel's Diplomatic Suite mirrors this elegant provenance yet is also stylishly contemporary.

Its spacious 160m2 footprint feels comfortable and residential, with features such as traditional mouldings and the working Carmen Red granite fireplace – a rare luxury for a hotel. In the living room, oversized mirrors capture the light and views of the surrounding gardens, while simple wall treatments enhance this impact as well as the intrigue sparked by the floral wallcovering viewed through the mahogany door. Tranquil tones of taupe and grey in the textiles, along with muted "regal" purple accents, allow the zip of orange in the artwork to concentrate the room's focus towards the lounge area and intensify its visual excitement.

Double doors lead to a timelessly graceful dining room and an adjoining, light-filled conservatory overlooking the gardens below. Rich mahogany timbers, a polished stainless steel glass-top dining table, and a neutral palette of solid colours result in a stately space suitable for entertaining guests. At night, the disc-shaped "floating" chandelier crafted from perforated metal scatters ethereal twinkles of light across the room.

In contrast to the "public" spaces' masculine confidence, the "private" master bedroom and secondary bedroom have a delightful, feminine feel. The floral wallcoverings' tone-on-tone greys allow the spaces to be playful yet modern, while the predominance of white in the upholstery and painted millwork add freshness. In the master bathroom, a square bathtub and tiles in Carrara marble contribute a classic touch. The secondary bedroom benefits from a sunroom extension framed by smartly striped curtains connecting the design with that of the dining room.

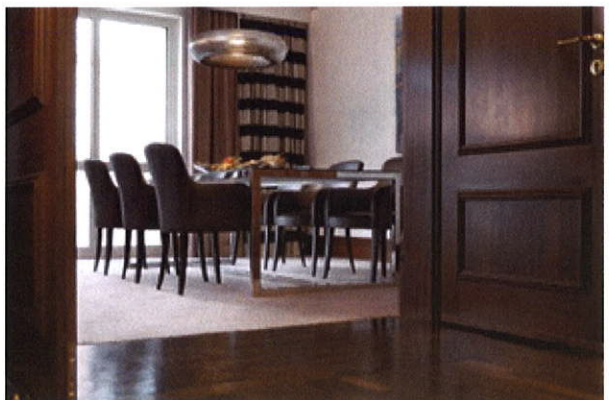
Le Méridien Stuttgart also enjoys the largest suite in the city, the 250 m2 Presidential Suite which has been re-imagined by JOI-Design to have a timeless elegance with a sophisticated grey and gold colour palette. Grand mirrors with richly polished timber frames draw the light and lush vistas viewed through the windows into the living room, the heart of the spaces. The original, working fireplace creates a natural gathering space, providing a warm and cosy comfort that makes guests feel right at home. Adjacent to the living room is an intimate, round dining table hewn from honey-tinged hardwoods and an elevated winter garden, a solarium fitted with plush ivory upholstered loungers that offer an ideal spot for relaxation in the sunlight - especially cherished during the cooler months.



Presidential Suite Winter Garden Room



Diplomatic Suite Living Room



Diplomatic Suite Dining Room



With its generous footprint, the Presidential Suite is large enough to accommodate a conference room. Heavy, full-height mahogany doors contribute to the sense of grandeur, along with a stately, 12-seat table crafted from beautifully grained hardwood solids and with traditionally fluted pediments. A tiered crystal chandelier above the table provides an elegant lighting solution that is bright enough for the functional requirements of a meeting, yet can be dimmed when the space is used as an impressive dining room for entertaining guests.



Presidential Suite Living Room



Presidential Suite Conference Room



Diplomatic Suite Master Bedroom



Diplomatic Suite Secondary Bedroom

URL : <http://www.etravelblackboardasia.com/article/78073/modern-and-majestic-joi-design-bestows-stately-sophistication-upon-le-mridien-stuttgart>

Copyright © Agents Support Systems Pty Ltd 2001-2011 Powered by **AGENTS SUPPORT SYSTEMS**